



Touchless Wipe Dispenser

User Guide



Quick Start Guide

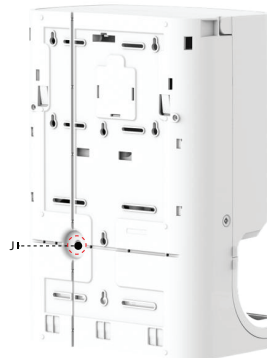
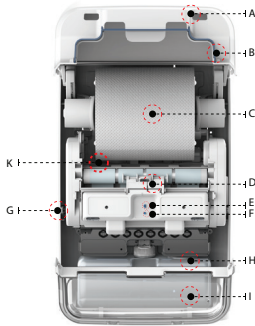
1. Unbox and remove all packing material.
2. Install Reva on wall or place on countertop.
3. Install included battery cradle with 6 C-cell batteries (sold separately).
4. Install genuine RevaWipe roll and press multi-function button to advance wipe into dispenser. Press button again to cycle the dispenser one revolution and ready the wipe into position.
5. Open lower cover and remove fluid reservoir.
6. Fill fluid reservoir with desired fluid for wipe wetting.
7. Ensure proper labeling is attached for the fluid chosen and ensure all PPE requirements are met for the fluid chosen for use.
8. Re-install fluid reservoir into machine and close lower cover.
9. Close and latch upper cover.
10. Cycle the machine using the "**Wet**" wipe sensor to prime system with fluid and ensure proper wetting of wipe. (1-3 wet wipes may be required to ensure full wetting is achieved)

Unpacking your Reva

Contents:

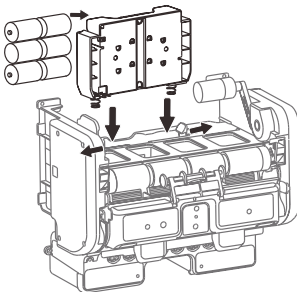
1.	Reva dispenser	1x
2.	Key	2x
3.	Mounting screws and wall anchors	4x
4.	Removable disposable battery cradle	1x
5.	2 qt. fluid reservoir	1x

Getting to Know your Reva

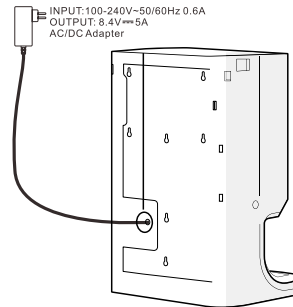


- | | | | | | |
|---|------------------|---|-----------------------|---|--------------------------|
| A | Upper Cover | E | LED Lights | I | Lower Cover |
| B | Sprayer Shroud | F | Multi-Function Bottom | J | Wall Adapter Power Input |
| C | RevaWipe Roll | G | Cover Latch | K | Battery Receiver |
| D | Wipe Feed Roller | H | Fluid Reservoir | | |

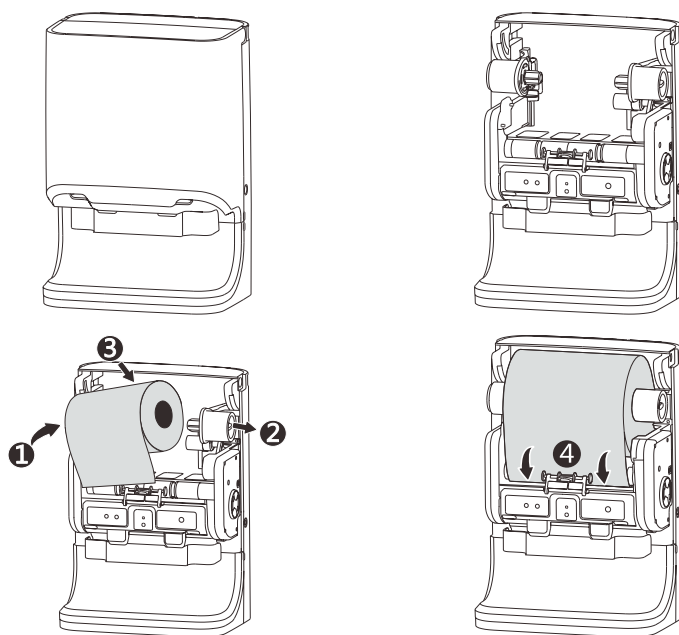
Power Supply



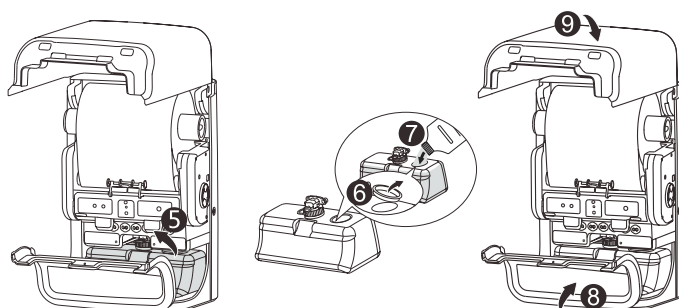
C Size Alkaline Batteries x6



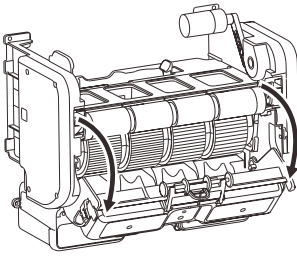
RevaWipe Loading



Fluid Reservoir Filling/Refilling



Troubleshooting



⚠ Open operation panel to clear paper jam

LED Light and Multi-function Button

Reva is equipped with a small LED light and one multi-function button for ease of operation.

LED Light Function:

When batteries or power is installed to Reva, Reva will automatically power on and cycle through a series of lights as it powers up.

Multi-function Button:

When power/batteries are plugged into unit, it will power up automatically. When the unit is on, button works to cycle the wipe dispenser and feed new wipe roll. Press and hold button for 3 seconds to power unit off/on.

Installation Instructions

For your convenience, Reva can be hung on a wall using included hardware or placed on a table top for use. An integrated bubble level is provided to assist in the mounting of Reva.

Wall Installation:

1. Choose the desired location for Reva to be installed, making sure to leave enough room above and around Reva to fully open covers for servicing your Reva.
2. Place empty Reva at desired location on wall and mark 4 mounting hole locations on wall. An integrated bubble level is provided in machine back plate to aid in level placement of Reva.
3. Remove unit from wall and install included mounting hardware, using anchors where required. Leave screw heads sticking out ~1/2".
4. Place Reva back on wall on mounting screws and tighten screws to secure Reva to wall.

Readying Your Reva For Use

Reva is designed to be used with genuine RevaWipe rolls and the fluid of your choice for wetting. Manufacturer's directions for use for the fluid chosen should be followed at all times. Stickers for labeling the fluid reservoir are included for the convenience of the user but the user is responsible for making sure all requirements for their fluid are followed.

Reva is capable of being powered with the included battery cradle and 6 C-cell batteries **(sold separately)**, an optional rechargeable battery pack and charger **(sold separately)**, or an optional wall adapter **(sold separately)**.

Wipe Rolls for Reva

Genuine RevaWipe rolls must always be used in your Reva. Reva is designed to wet the wipe the proper amount and Reva's auto cutting system may be damaged by the use of anything other than genuine RevaWipe rolls. Genuine RevaWipe rolls may be purchased from your Reva dispenser provider or from medtekk.com.

Fluid for Reva

Although most fluids with a viscosity similar to water may be used in Reva, it is important to understand that some chemicals will leave residue that may clog the spray tips in Reva. If the tips become clogged, they can very easily be removed and cleaned by pulling them straight out with a small pair of pliers or forceps. They can be pressed directly back into place the same way. Concentrates are a great choice for use in Reva but using hard or mineral rich water to mix can also clog spray tips. **DISSOLVING CONCENTRATE PACKS OR ANY DISSOLVING PLASTICS WILL DAMAGE INTERNAL COMPONENTS AND VOID REVA'S WARRANTY.**

Fluid Reservoir Labeling

It is important that users be aware of the fluid being used to wet the wipe when using Reva. A blank label for the fluid reservoir is included to help ensure proper labeling of fluid reservoir. User should check with the fluid they are using and local regulation to ensure proper labeling requirements are met. Directions for use of the fluid chosen should be followed at all times.

Servicing Reva

Fluid level is easily monitored by visual inspection of the reservoir through front cover. It is important to follow all instructions for use from the fluid manufacturer for the fluid chosen in Reva.

Wipe level is monitored automatically by Reva. A blue blinking light will signal the need to have a replacement RevaWipe rolls ready for refilling Reva. Reva's low wipe indicator will begin blinking with about 100 wipes remaining in Reva.

It is important to use only genuine RevaWipes in Reva to ensure the proper wetting and cutting of the wipe. Use of incorrect wipes can permanently damage Reva.

If changing the fluid being used in Reva, it is important to fully empty and rinse the fluid reservoir of any old fluid to avoid contamination. It is also important to safely cycle and discard the first couple wetted wipes to ensure all old fluid has been removed from system before using wipes. 3 – 5 wetted wipes should be plenty to fully empty Reva of old fluid and prime fluid system with new. Always follow the fluid manufacturer's directions for use and PPE guidelines when handling wetted wipes.



MedTekk, Inc.

medtekk.com